

# RSH01 & RSH02

## Belt tensioner for tensioning of round and V-belts

RSH01 450 mm (18") clamp travel,  
suitable to >1 m belt length.

RSH02 900 mm (35") clamp travel,  
suitable to >2m belt length.



### Small:

Dimensions (HxWxD): 690 x 320 x 90 mm  
Weight: approx. 1930 g

### Big:

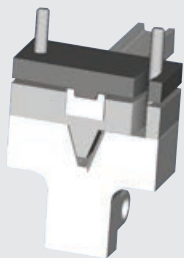
Dimensions (HxWxD): 1150 x 320 x 90 mm  
Weight: approx. 2420 g

### Description

RSH01 (450 mm)  
RSH02 (900 mm)

### Order No.

**FBWRSH01**  
**FBWRSH02**



Special editions for U- and square-profiles (please refer to page 50)