

FZ01 Vario

Guiding clamp FZ01 Vario metal can be assembled in two operating modes. With and without handle

Convenient and tough for round belts up to \varnothing 10 mm and V-belts up to profile 10 (Z).

Exchangeable profile jaws allow custom profiles to be spliced easily.

Highlights

- Fast, reliable and exceptionally precise connecting of PU and TPE profiles.
- ➔ Special inserts for: PJ2, PJ3 and PJ4 ribbed V-belts.
- ➔ Your choice for standard and customized profiles!



Tutorial video on YouTube

Dimensions: 240 x 125 x 50 mm
140 x 195 x 50 mm without handle
Weight: approx. 365 g
approx. 320 g without handle

Description

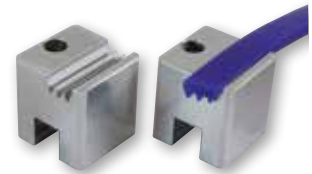
FZ01 Vario
Profile jaws PJ2/PJ3/PJ4
Profile jaws T-Profile 10x4,5
Profile jaws T-Profile 9,5x3,5

Order No.

FBWFZ01V
FBWPBPJ2-4
FBWPBT10x45
FBWPBT95x35



Convertible!
Can be used in just a few steps,
even without handles.



Profile jaws for special profiles



FZ01 Vario with profile jaws for belt edges



Quick clamp device for inserting the profiles in exchangeable profile jaws.



Automatic unlocking starts off lateral pressure.



Precise welding thanks to constant pressure.



Remove welding bead with side cutter.