

FZ02/3F

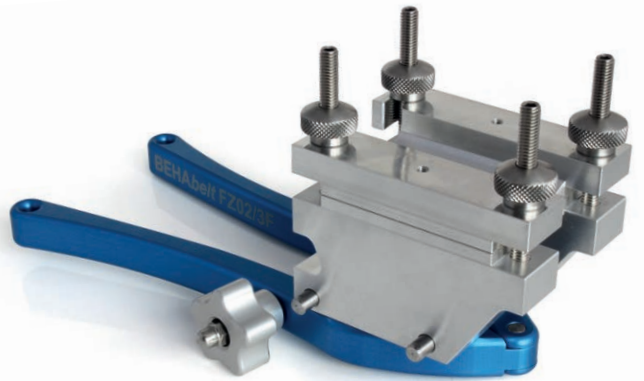
Robust and precise FZ02/3F guide clamp for flat belts and special profiles.

Max. width 80 mm and height 1.6–5 mm.

Adapter inserts for special profiles wider than 40 mm and flat belts with a v-guide.



Recommended for use with EErgo 90



For 90° welding

Dimensions: 205 x 90 x 100 mm (HxWxD)
Weight: approx. 617 g

Description
Guiding clamp FZ02/3F

Order No.
FBWFZ02/3F



Tutorial video on YouTube