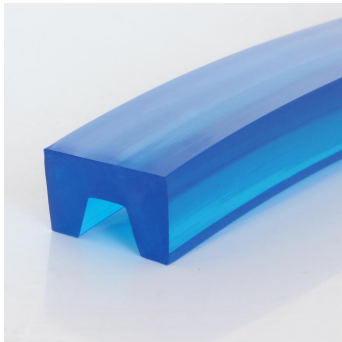


Special profiles

PU85A sapphire blue smooth



| Article no. | Dimensions | Cross section | approx. weight | Standard roll | | Recommended min. pulley ØØ | | Fmax/belt (standard) | |
|-------------|------------|-----------------|----------------|---------------|-----|----------------------------|------|----------------------|------|
| | mm | cm ² | kg/100m | m | ft | mm | inch | kg | lbs |
| FBSK15X10LG | 15x10 | 1,2 | 14 | 30 | 100 | 100 | 3,9 | 41 | 90,2 |

approx. 88° Shore A

Recommended Pretension 4...8%

Coeff. of friction μ steel approx. 0,6

Coeff. of friction μ PE approx. 0,35

Coeff. of friction μ HDPE approx. 0,3

FDA/EC compliant

Characteristics



Hydrolysis resistance

Hydrolysis resistance (HY). Suitable for humid environments.



microbial resistant

Microbial resistant materials do not provide a breeding ground for microorganisms.



Cold-flexible

Particularly flexible at low temperatures down to -30°C



FDA (Food and Drug Administration)

FDA/EC conformity for direct food contact

The above information is the result of in-house quality testing. They do not contain any guarantee of properties and in particular do not contain any statements about the suitability of the product for specific purposes, so that no claims against us can be derived from them. In particular, the information does not release the purchaser from his obligation to inspect incoming goods.

Subject to change without notice - 07/2025