

# FZ01 Guide Clamp and Multi TC Welding Instrument

Instruction manual

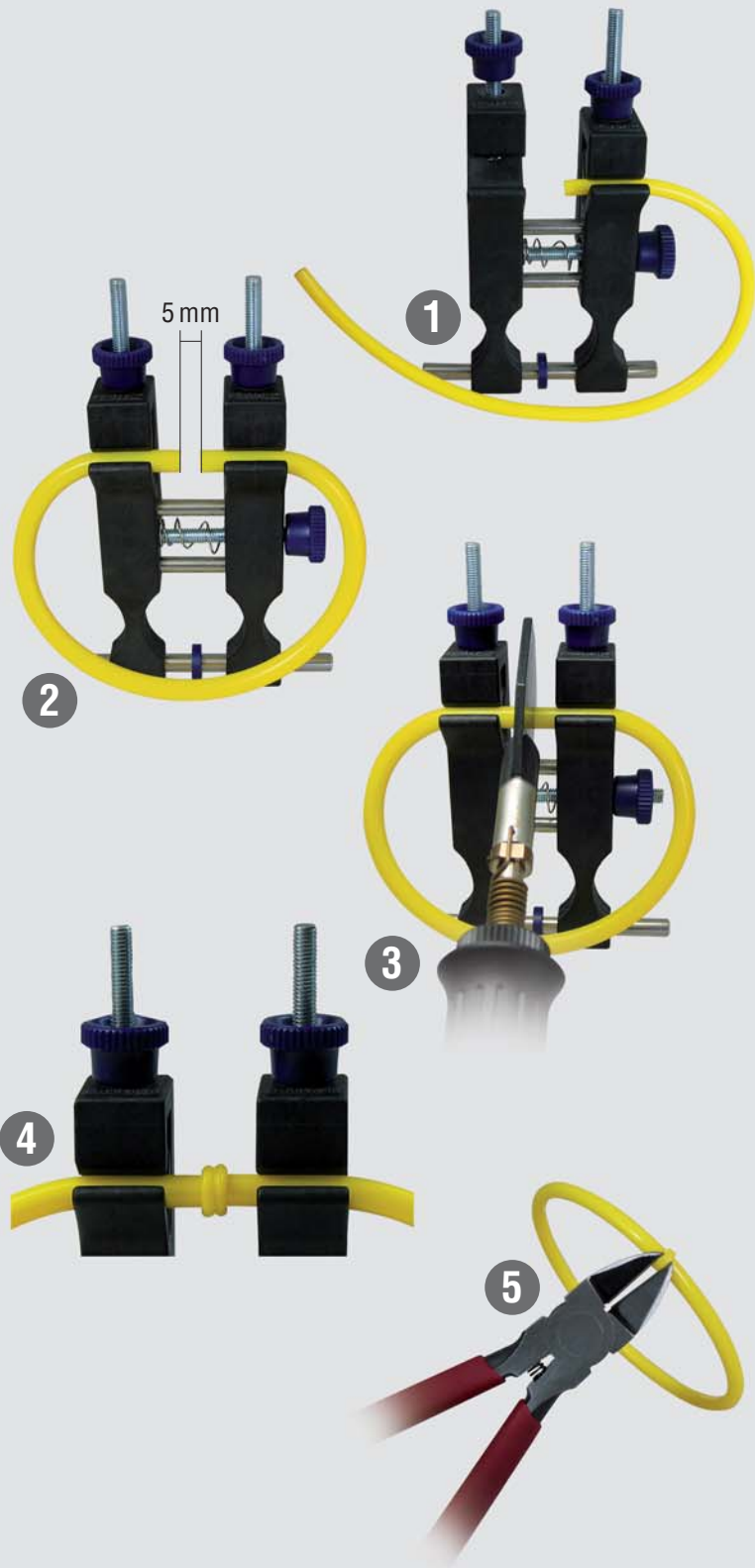
## General information

The temperature controlled Multi TC Welding Instrument in combination with the FZ03 Guide Clamp is used for fast, safe and accurate welding of Round and V-belts made of Polyurethane and Polyester.

FZ01 ist suitable for Round belts up to  $\varnothing$  10mm and V-belts up to profile 10 (Z).

## Work sequence:

- In order to ensure a constant welding temperature, we recommend to ensure that the belt is at room temperature before commencing the welding procedure.
- Cut off both ends of the profile to be connected.
- Fix belt ends in appropriate guide clamp at a distance of approx. 5mm (1) (2).
- Once the welding paddle has reached the ideal welding temperature (see rear side), insert welding paddle in the gap and press both belt ends slightly onto the paddle (3). Press the belt ends at least 30-90 sec. together (depending on the material cross section).
- If you have carried out an accurate welding, a belt boss of approx. 3 to 4 mm appears between the belt ends and the welding paddle free of blow holes.
- Please make sure that the total surface of the belt ends forms a boss during the heating-up time.
- Release the pressure on the clamp and remove the hot paddle. Quickly press the belt ends together and close the set screw on the belt clamp.
- Welding process is finished.
- Leave profile clamped for 5-10 min. within the guide clamp to cool off (4).
- Remove the bead upset with the SE02 edge cutter or a sharp knife (5).
- After each welding procedure, the welding paddle should be cleaned by using a belt rest piece or a cotton cloth otherwise the welding is polluted and can break. Do not use knife or hard objects as this would damage the teflon coating.
- Please follow the Instruction Manual. We recommend your practise / exercise.



### BEHA Innovation GmbH

In den Engematten 16  
79286 Glottertal/Germany  
Tel.: +49 (0) 76 84/907 - 0  
Fax: +49 (0) 76 84/907 - 101  
e-mail: [info@behabelt.com](mailto:info@behabelt.com)  
internet: [www.behabelt.com](http://www.behabelt.com)

# Multi TC Welding Instrument

## Safety and warning notes

### Notes on the appliance or in the operating instructions:

- ⚠ Warning of a dangerous situation. Read the operating instructions.
- 📖 Note. It is essential that you read this
- ⚠ Caution! Dangerous voltage, danger of electrical shock.
- ☐ Continuous double or reinforced installation in accordance with Class II IEC 536.
- CE Conformity mark, confirms that the applicable guidelines have been observed. The EMC guideline (89/336/EEC) with the Standards EN 50081-1 and EN 50082-1 have been met. The low voltage guideline (73/23/EEC) with the Standard EN 61010-1 has also been met.
- ⚠ Before the appliance is used, the operating instructions must be read carefully and followed in all aspects.
- ⚠ Before the appliance is used, the operating instructions must be read carefully and followed in all aspects. If the instructions are not observed, or if you should forget to follow the warnings and notes, serious injuries to the user or damage to the appliance could occur.

### General information Multi TC

Warm up time: 10 min  
 Polyurethane profile:  
 Adjust 290°C mark  
 (min. 285°C, max. 300°C)  
 Polyester profile:  
 Adjust 240°C mark  
 (min. 215°C max. 245°C)  
 📖 For difficult external temperature conditions increase the welding temperature.

### Transport and Storage

The appliance must be stored in a dry and closed area. If the appliance has been transported at extremely high temperatures, it needs to be acclimatised until it is completely dried out before it is switched on.

### Safety Measures

- ⚠ For all work, the applicable accident prevention regulations of the professional association must be observed.
- ⚠ Multi TC Welding Instrumen may only be held on the handles provided for this. Touching the welding paddle during operation must be avoided at all costs.
- ⚠ The appliance may only be connected to the input voltage specified on the nameplate.
- ⚠ If the safety of the operator can no longer be guaranteed, the appliance must be taken out of operation and secured against unintended use.  
 This is the case if the appliance:
  - displays obvious damage
  - no longer performs the desired functions
  - was stored for too long under unfavourable conditions
  - was subject during transport to mechanical strains.

### Intended use

The appliance may only be used under those conditions and for those purposes for which it was constructed. In particular the safety notes ( ⚠ work procedure) and use in a dry environment must be observed.

- ⚠ Operational safety is no longer guaranteed if the appliance is modified or converted.



Subject to alterations!



Reg. No. 241088Q1

### BEHA Innovation GmbH

In den Engematten 16  
 79286 Glottertal/Germany  
 Tel.: +49 (0) 76 84/907 - 0  
 Fax: +49 (0) 76 84/907 - 101  
 e-mail: info@behabelt.com  
 internet: www.behabelt.com

PBEBFZ01M001 - 10/2009

